

Katalog náhradních dílů pro
přímočaré řezačky

GARUDAN[®]

KS-66, 86, 106 serie



ANITA B, s.r.o.

Průmyslová 2453/7

680 01 Boskovice

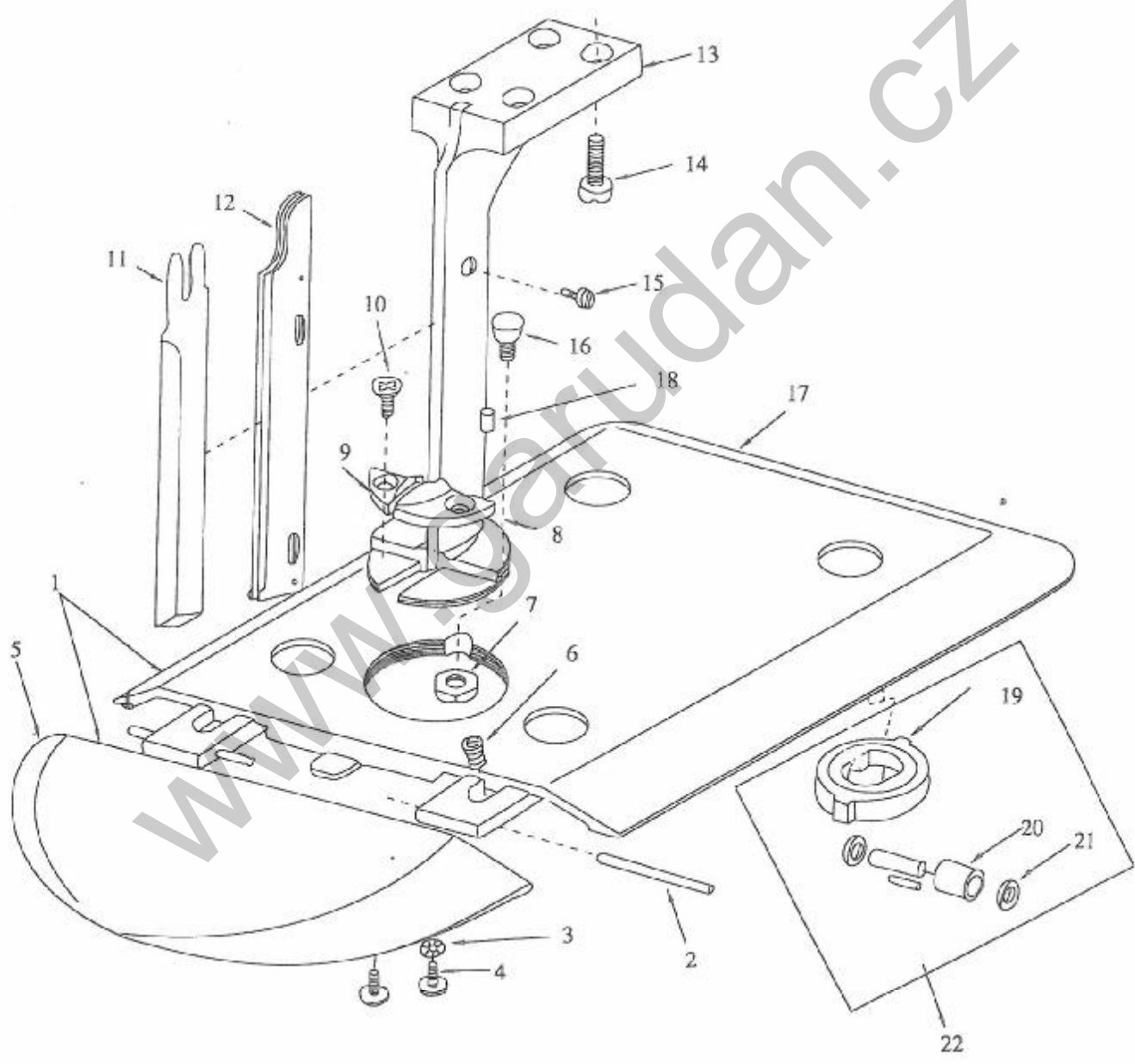
Czech Republic

tel: +420 515553628

fax: +420 516452751

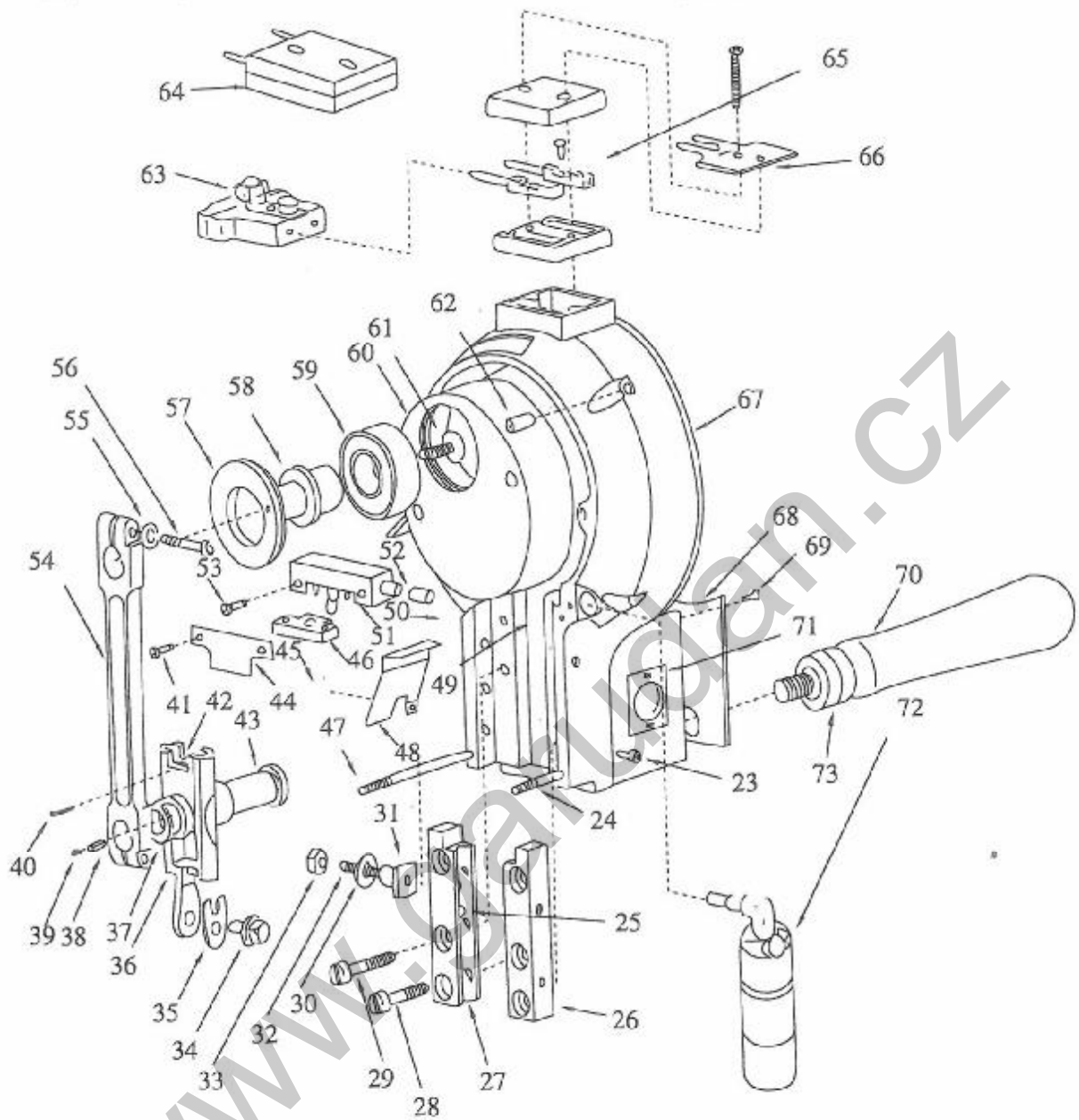
e-mail: info@anita.cz

1. 底盘刀库部分 STANDARD & BASE PLATES 代号(KA)



代 号	名 称	Desonription	数 量	备 注
Code Name			Qt	Note
KA 1	底板全套	Complete plate	1	M078
KA 2	芯 轴	Hinge Pin Short	2	M081
KA 3	外齿锁紧垫圈 4	Clamp Washer 4	4	M089
KA 4	底盘螺钉	Hinge Pin Clamp Screw	4	M082
KA 5	盘 翼	Plate Wing	1	M077S
KA 6	弹 簧	Plate Wing Tension Spring	2	M091
KA 7	六角螺母	Plate Nut.	1	M090
KA 8	右刀库舌	Right Throat Plate	1	} M088
KA 9	右刀库舌	Lift Throat Plate	1	
KA 10	螺钉M 4 × 10	Screw M4×10	2	M087
KA 11	刀 片	Knife	3	M191
KA 12	衬片组合	Knife Side	1	M086
KA 13	刀 库	Standard	1	M085
KA 14	螺钉M6×20	Screw M6×20	4	M084
KA 15	螺钉M3×5	Screw M3×5	3	M084
KA 16	销	Spin	1	M090
KA 17	底 盘	Plate	1	M077L
KA 18	销 4×10	Spin 4×10	2	
KA 19	滚子架组合	Roller Rack Assy(Rwbber)	4	M080R
	滚钉 5×19.8	Round Head Rolling Pin 5×19.8	4	
KA 20	滚 子	Roller	4	M080C
KA 21	垫 圈 5	Washer 5	8	
KA 22	全套滚轮	Rubber Mounted Roler Complete	4	M080

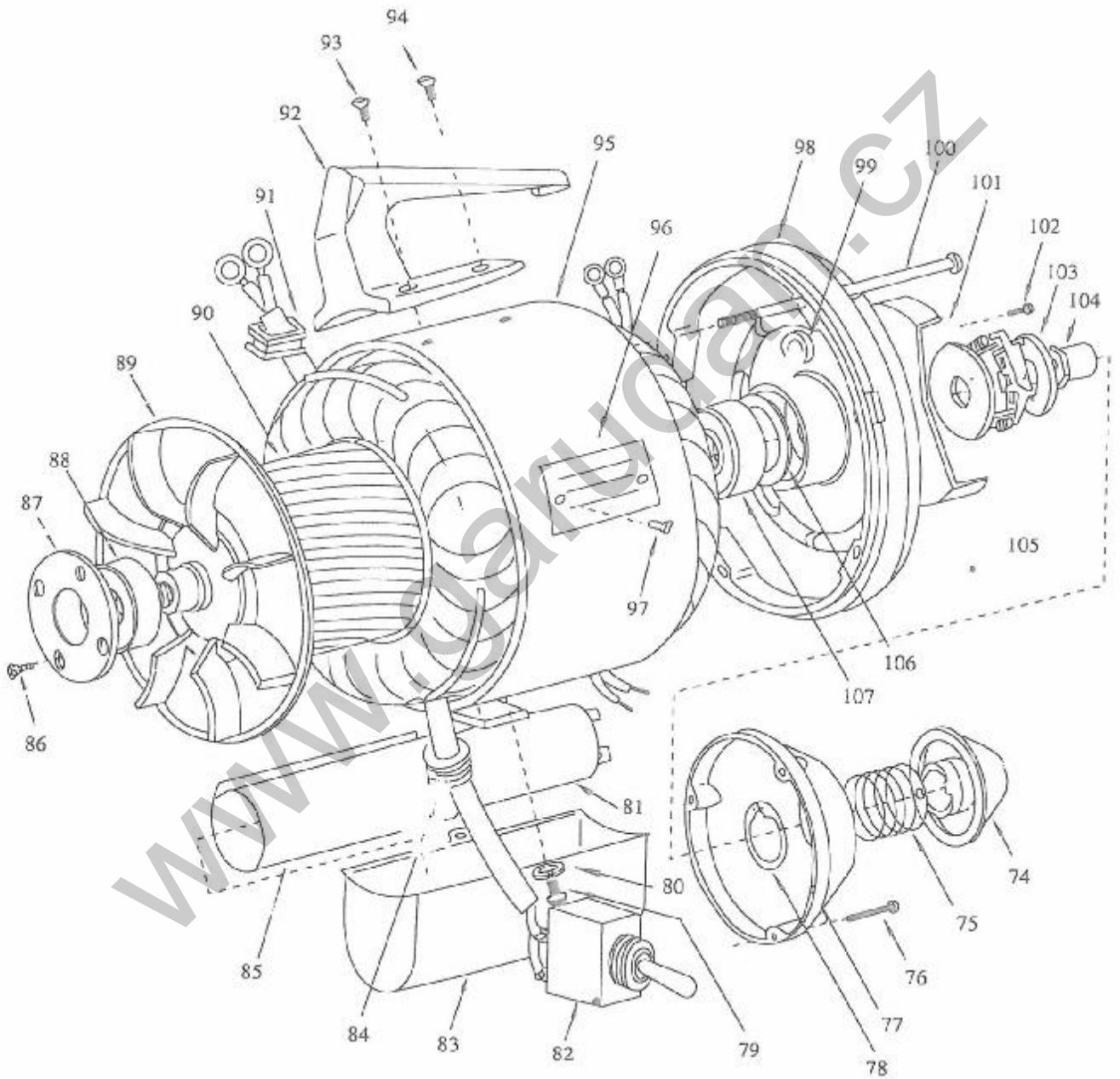
2. 前端盖部分 FRONT COVER MECHANISM 代号 (KA)



代号 Code Name	名称	Description	数量 qt	备注 Note
KA 23	螺钉M4×8	Screw M4×8	2	
KA 24	短双头螺栓	Short Stud	1	M062
KA 25	滑轨油毡	Guide Felt	2	
KA 26	右侧滑轨	R.H.Guide	1	M048
KA 27	左侧滑轨	L.H.Guide	1	M049
KA 28	螺钉	Screw	3	M047
KA 29	螺钉	Screw	3	M047
KA 30	垫圈	Washer	3	M043
KA 31	方头调节螺母	Guid Adjusting Nut	3	M046
KA 32	螺钉 M5×20	Screw M5×20	3	M045

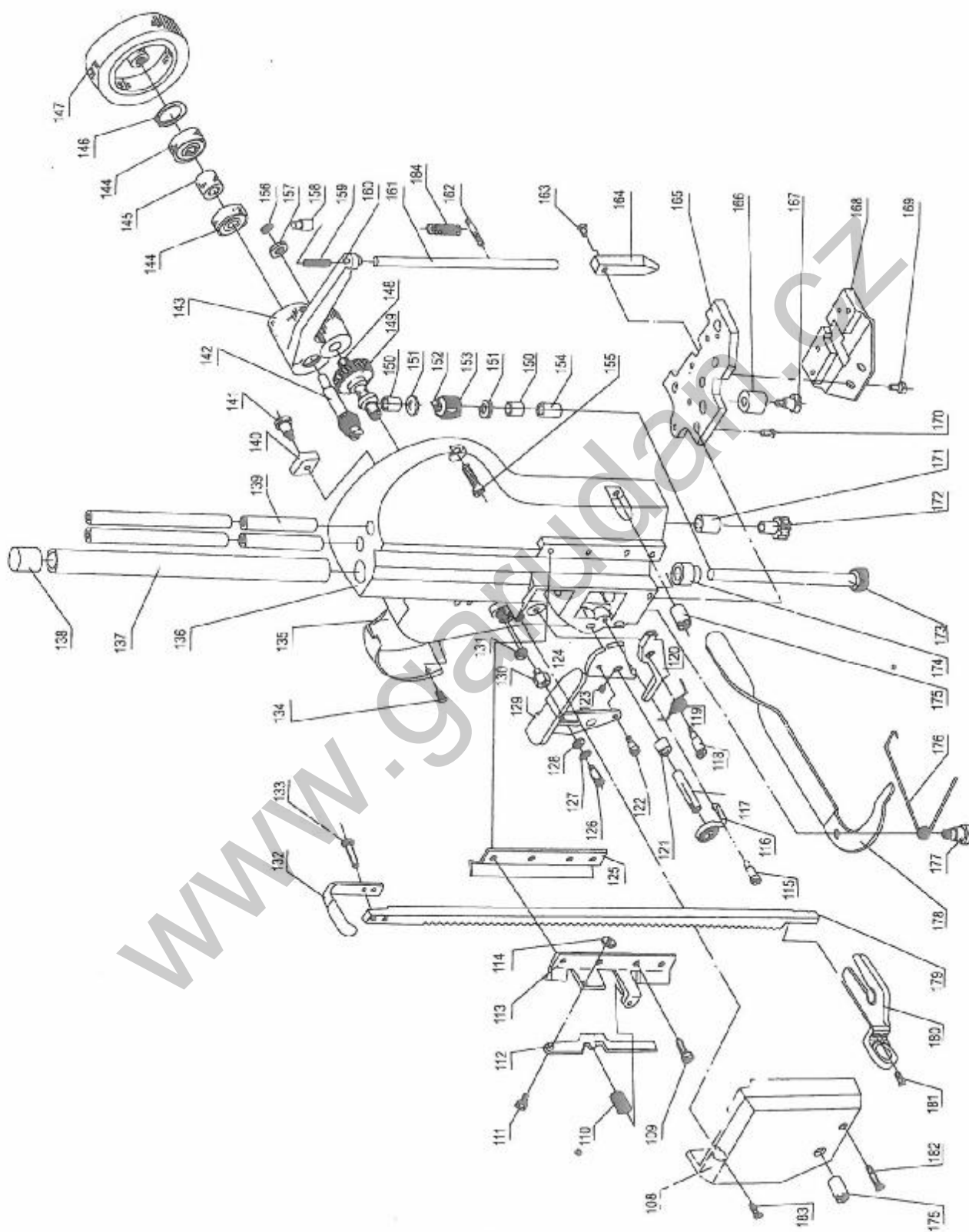
代 号	名 称	Desonription	数 量	备 注
Code Name			qt	Note
KA 33	螺母 M5	Nut M5	3	M042
KA 34	方头螺钉	Square Screw	1	M051
KA 35	方头螺钉垫	Knife Lock Washer	1	M041
KA 36	滑 枕	Cross Head	1	M050
KA 37	垫 片	Connecting Rod Washer	1	M044
KA 38	油 毡	Oil Felt	1	
KA 39	油 堵	Wrist Pin Plug	1	M040
KA 40	铆钉 1.6×9	Rivets 1.6×9	2	
KA 41	螺钉M2.5×4	Screw M2.5×4	2	M211
KA 42	油 毡	Oil Felt	1	
KA 43	滑枕轴	Wrist Pin	1	M039
KA 44	防油板	Oil Plate	1	M210
KA 45	螺钉M3×3	Screw M 3×3	2	M213
KA 46	油 毡	Oil Felt	1	
KA 47	双头螺栓	Stud	1	M060 M061
KA 48	防油板	Oil Guard	1	M212
KA 49	螺钉M 4×4	Screw M4×4	1	M054
KA 50	空心棉丝绳3×150	Oil Felt 3×150	1	M033
KA 51	导油管座	Oil Pad Holder	1	M032
KA 52	导油管套	Oil Tude	1	M209
KA 53	螺钉 M3×16	Screw M3×16	2	
KA 54	连 杆	Connecting Rod	1	M026
KA 55	垫 圈4	Washer 4	2	M037
KA 56	螺钉M4×16	Screw M4×16	2	M038
KA 57	轴承盖	Bearint Cover	1	M029
KA 58	轴承轴	Bearing Shaft	1	M030+031
KA 59	轴承80201D	Bearing 80201D	1	M064
KA 60	曲 柄	Crank	1	M027
KA 61	轴承轴螺钉	Screw for Brg Shaft	1	
KA 62	螺 母	Front to Rear Bearing Nut	4	M057
KA 63	插头组合	Attachment Plug	1	M069
KA 64	插头组合	Termial Block	1	M070
KA 65	插头蕊	Terminal sleeve	2	M071+072
KA 66	插座联接板	Ground Clip	1	M066
KA 67	前端盖	Frount bearing Housing	1	M055
KA 68	后盖板	Switch Cover	1	M215
KA 69	螺钉M3×5	Screw M3×5	4	M075
KA 70	手 柄	Operating Handle	1	M073
KA 71	开关牌	Switch Plate	1	
KA 72	油 杯	Oil Cup	1	M034+035
KA 73	锁紧螺母	Clutch Nut	1	M074

3. 电机部分 MOTOR & HOUSTNG MECHANISM 代号(KA)



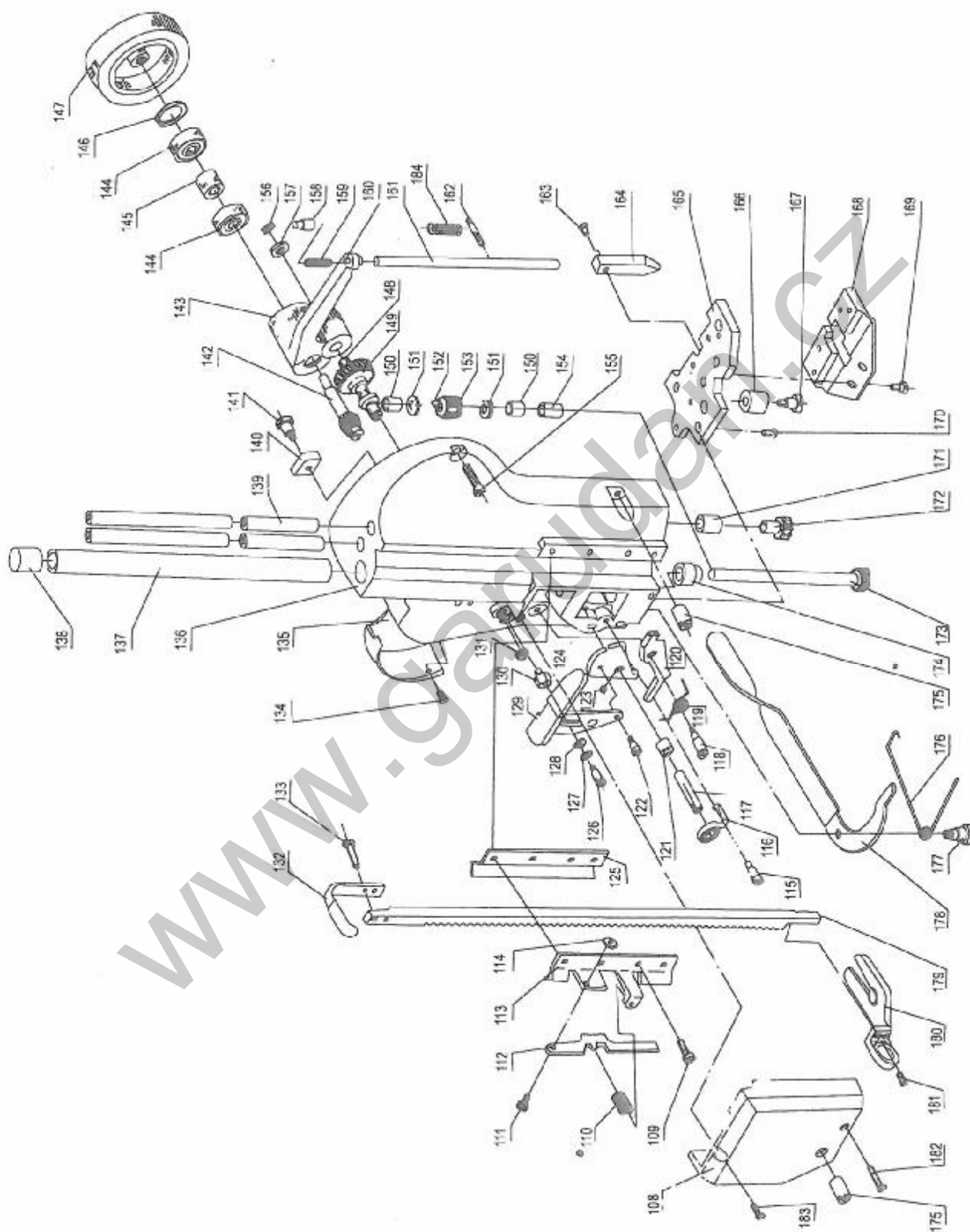
代 号	名 称	Description	数 量	备 注
Code Name			qt	Note
KA 74	手 轮	Turning Knob	1	M009
KA 75	离合器弹簧	Clutch Spring	1	M021
KA 76	螺钉M 3×16	Screw M3 ×16	4	M006
KA 77	防尘盖	Dusr Cap	1	M008
KA 78	轴用弹性挡圈	Retaining Ring	1	M022
KA 79	螺钉M4×6	Serew M4×6	2	M205
KA 80	垫 圈 4	Washer 4	2	
KA 81	电容器具100μF	Capacitor 100μF	1	M206
KA 82	扭子开关	Switch	1	M020
KA 83	电容器盒	Capacitor Cover	1	M204+205
KA 84	电线护套	Wire Sleeve	1	
KA 85	电容器垫2.5×60×100	Wool Fabric	1	
KA 86	螺钉M3×10	Screw M3×10	1	
KA 87	前轴承盖	Front Bearing Cover	4	M065
KA 88	轴承80202D	Bearing 80202D	1	M023
KA 89	风 扇	Fan	1	M003
KA 90	转 子	Rotor With Shaft	1	M004
KA 91	电线护套	Wire Sleeve	1	"
KA 92	提 手	Carrying Handle	1	M203
KA 93	螺钉M4×18	Screw M4×18	2	
KA 94	螺钉M4×16	Screw M4×16	2	
KA 95	定 子	Capacitor Stator	1	M001
KA 96	铭 牌	Skin Cover	1	
KA 97	螺钉M2.5×4	Screw M2.5×4	2	M002
KA 98	后端盖	Rear Bearing Housing	1	M007
KA 99	电线护套	Wire Sleeve	1	M005
KA 100	长螺钉	Long Screw	2	M013+014
KA 101	绝缘盖	Insulate Cover	2	M200
KA 102	螺钉M4×10	Screw M4×10	2	
KA 103	离合器螺母	Clutch Nut	1	M025
KA 104	锁紧螺母	Shaft Lock Nut	1	M026
KA 105	离心开关	Automatic Cut-out Switch	1	M201+202
KA 106	波形弹簧片	Washer With Vave	1	M024
KA 107	轴承80201D	Bearing 80201D	1	M023/028

4. 前盖磨削部分 SHARPENER HOUSING MECHANISM 代号 (KA)



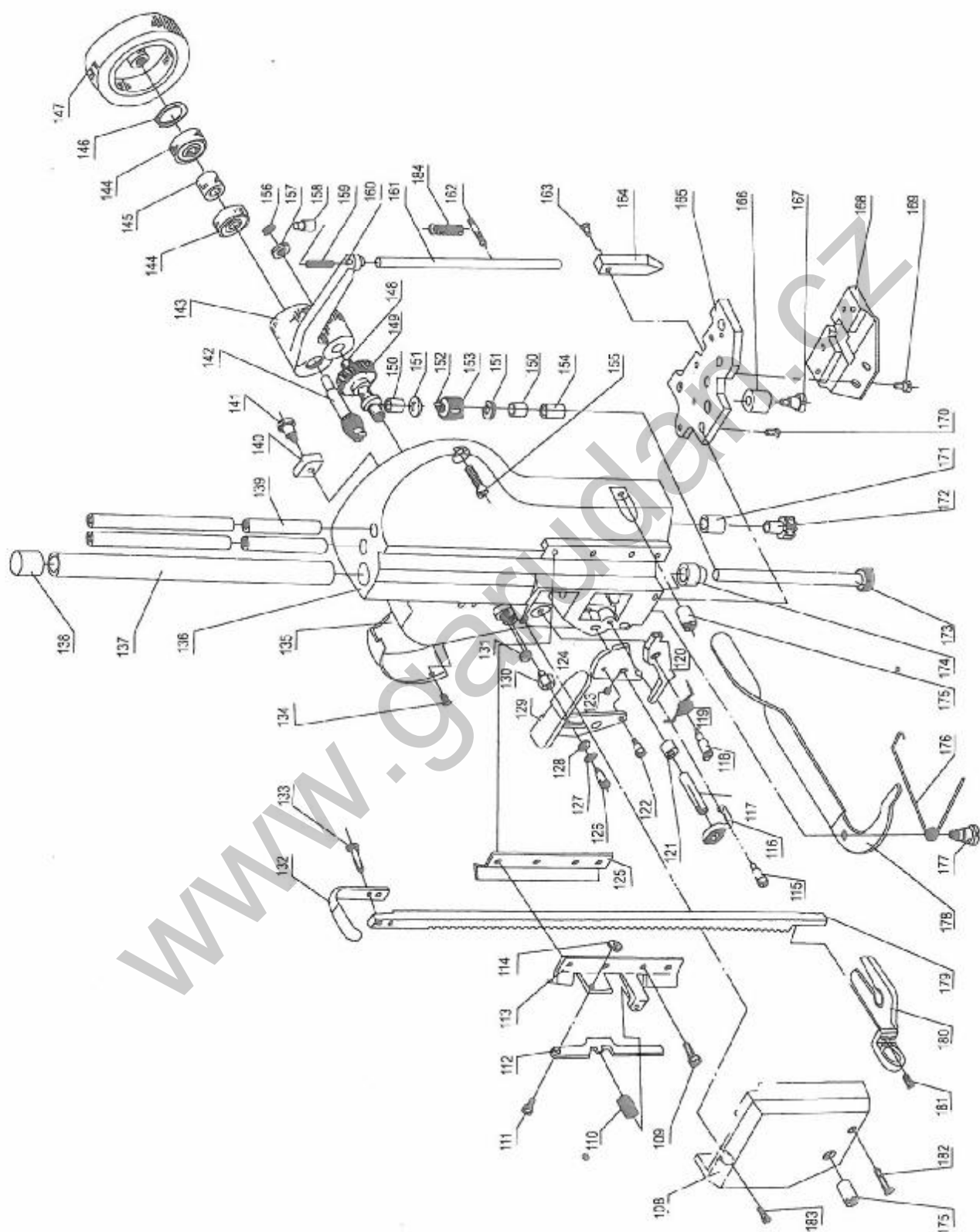
代 号	名 称	Desonription	数 量	备 注
Code Name			qt	Note
KA 108	凸轮罩盖	Cam Cover	1	M101
KA 109	螺钉M 4×10	Screw M4×10	4	M099
KA 110	压紧弹簧	Spring	1	M109
KA 111	齿板轴	Shaft for Great Plate	1	M121
KA 112	齿 板	Gear Plate	1	M120
KA 113	压脚导板	Slide for Pressure Foot	1	M122
KA 114	螺母M 4	Nut M4	1	
KA 115	弹簧螺钉	Screw for Spring	1	M098
KA 116	凸轮弹簧	Spring for Cam	1	M111
KA 117	凸轮轴	Shaft for Cam	1	M097
KA 118	变向柄螺轴	Screw Shaft for Latch	1	M096
KA 119	变向弹簧	Spring for Cam	1	M110
KA 120	变向柄	Latch for Cam	1	M124
KA 121	凸轮轴套	Bearing for Cam Shaft	2	
KA 122	凸轮螺钉	Screw for Cam	1	M118S
KA 123	螺钉M4X6	Screw M4×6	1	M117
KA 124	变向凸轮	Cam	1	M118C
KA 125	压脚下导板	Lower Slider for P.F Rod	1	M123
KA 126	手柄螺钉	Screw Shaft for Latch	1	} M119
KA 127	弹簧垫圈	Spring Washer	1	
KA 128	垫 圈5	Washer5	1	
KA 129	磨刀手柄组合	Sharpening Lever	1	M218
KA 130	六角头螺钉	Hexagon-headed Screw	1	
KA 131	六角螺母	Hexagon-headed Screw	1	M152
KA 132	压角杆提手	Pressure Foot Lift	1	M230
KA 133	螺钉 M3×5	Screw M3×5	2	
KA 134	螺钉 M3×6	Screw M3×6	2	M133
KA 135	传动轮盖	Cover for Driving Pullddy	1	M134
KA 136	磨削器外罩	Sharpencer Housing	1	M127
KA 137	传动管	Tube for Driving	1	M093

4. 前盖磨削部分 SHARPENER HOUSING MECHANISM 代号 (KA)



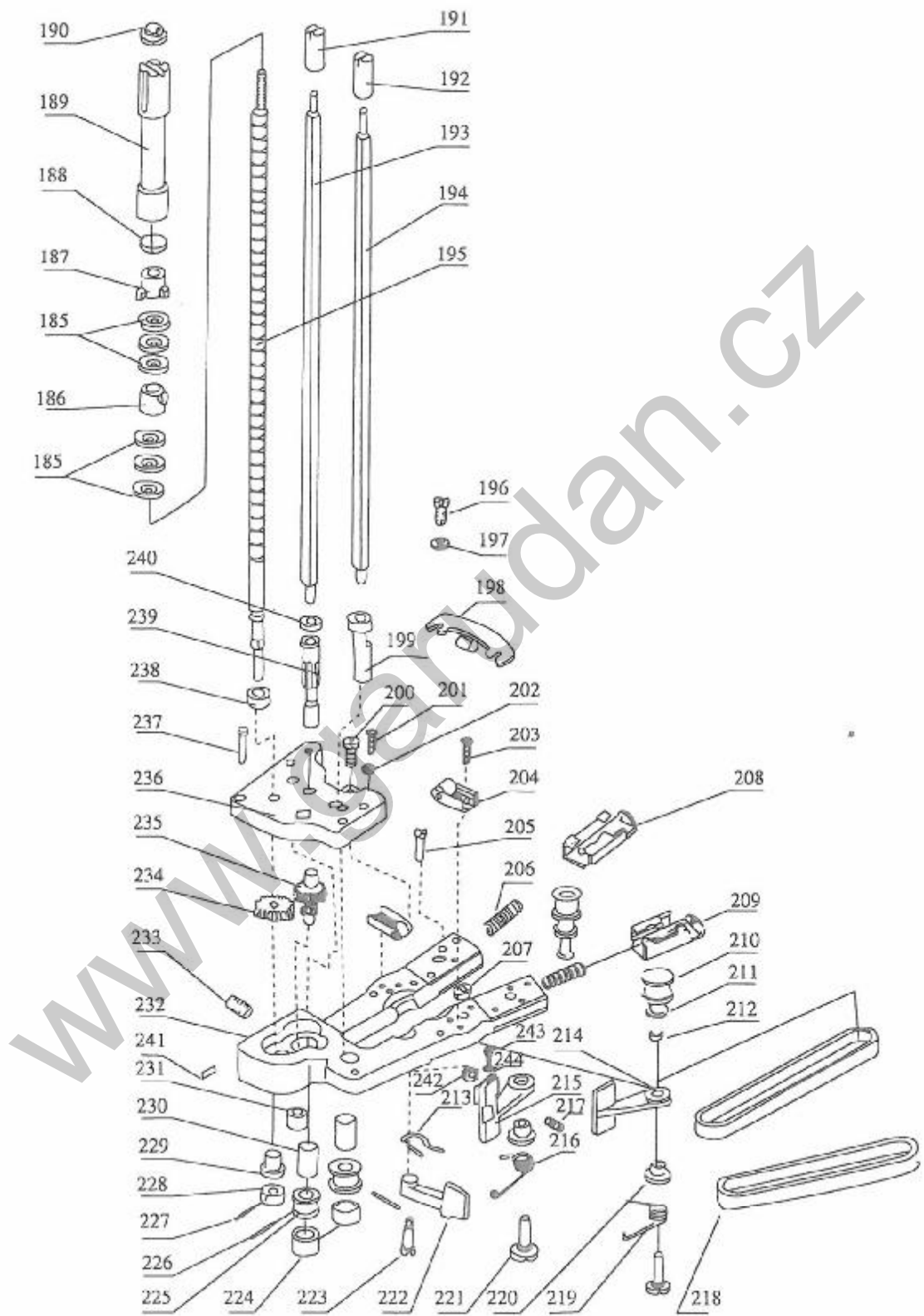
代 号	名 称	Desonription	数 量	备 注
Code Name			qt	Note
KA 138	导向管帽	Cap for Tube	1	M092
KA 139	方轴导向管	Tube for Square Shaft	2	M094
KA 140	油 垫	Felt Pad for Cross Head	1	M232
KA 141	螺 轴	Screw Shaft	1	M233
KA 142	齿轮轴	Gear & Shaft	1	M144
KA 143	曲 拐	Bell Crank With Pin & Bushing	1	M132
KA 144	轴承80018D	Bearing 80018D	2	M149
KA 145	轴承垫	Washer for Bearing	1	
KA 146	挡 圈22	Lock Ring 22	1	M155
KA 147	传动轮	Driving Pulley	1	M146
KA 148	传动斜齿轮轴	Shaft for Crank	1	M153
KA 149	传动斜齿轮	Idler Gear With Bushing	1	M156
KA 150	长轴齿轮上套	Bearing for drive Shaft	2	M151
KA 151	垫	Thrust Washer	2	
KA 152	键	Key	1	} M157
KA 153	键槽斜齿轮	Spiral Gear	1	
KA 154	长轴齿轮下套	Bearing for Drive Shaft	1	
KA 155	螺钉M5×14	Screw M 5×14	2	M100S/L
KA 156	挡 圈 6	Lock Ring 6	1	M150
KA 157	垫	Washer	1	M154
KA 158	弹簧挡销	Pin for Sharpener Housing	1	
KA 159	弹 簧	Spring	1	} M126 ^L _U
KA 160	销 轴	Pin fur bell Crank	1	
KA 161	止动杆	Push Rood	1	M139
KA 162	销1.5×10	Pin 1.5×10	1	M140
KA 163	螺钉M3×12	Scre M3×12	1	M142
KA 164	分离块	Spreader Pin	1	M143
KA 165	外罩底盘	Bottom Plate	1	M129
KA 166	螺轴套	Screw Shaft Sleeve	1	
KA 167	螺 轴	Screw Shaft	1	

4. 前盖磨削部分 SHARPENER HOUSING MECHANISM 代号 (KA)



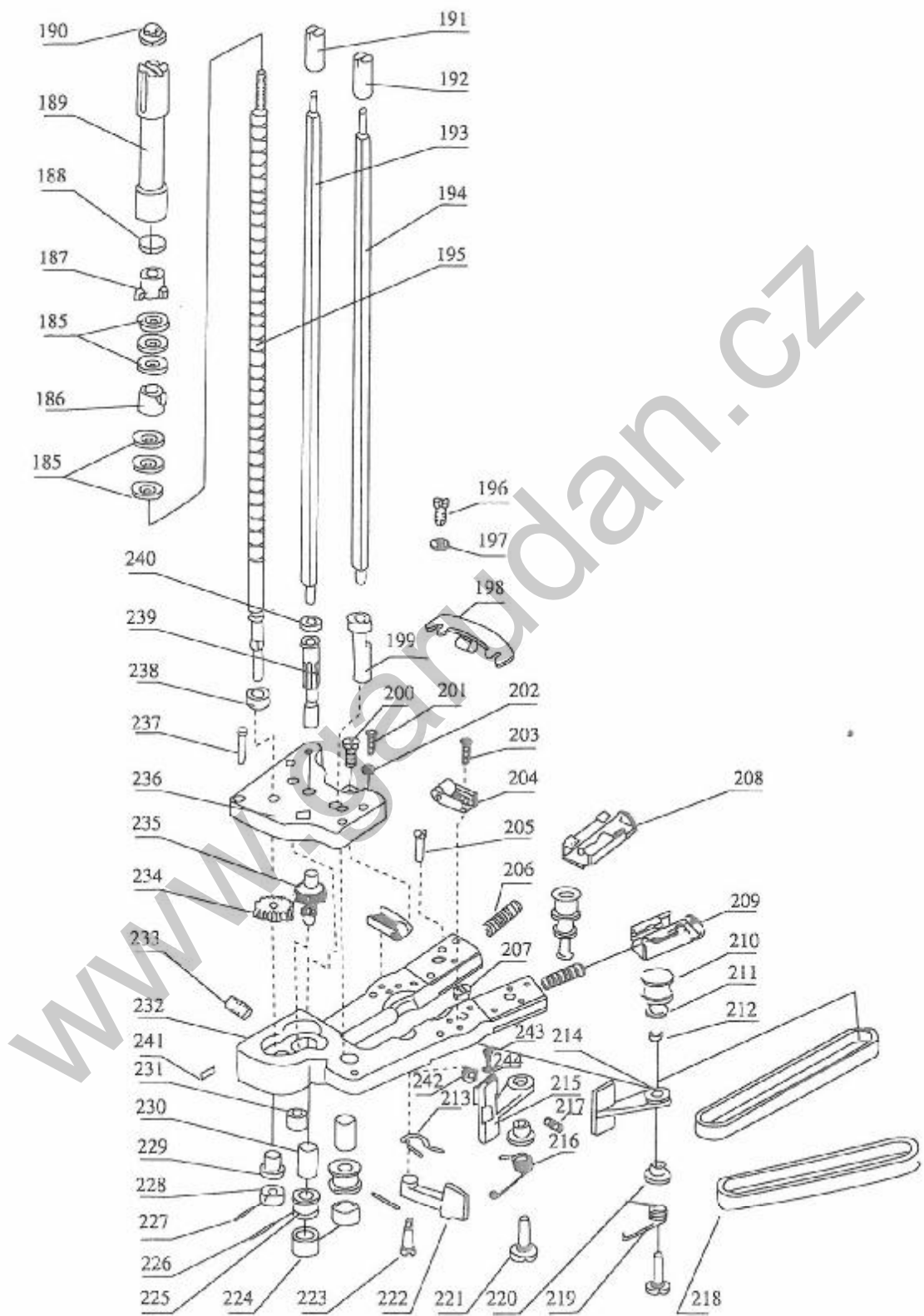
代 号	名 称	Desonription	数 量	备 注
Code Name			qt	Note
KA 168	油盘组合	Oil Pad and Holder	1	M130
KA 169	螺钉M 4×6	Screw M4 × 6	2	M131
KA 170	螺钉M 4×12	Screw M4 × 12	3	M128
KA 171	方孔齿轮套	Bearing for Gears	2	M145
KA 172	方孔齿轮	Squr Gear	2	M148
KA 173	长轴齿轮	Driver Shaft with Gear	1	M141
KA 174	螺杆导套	Screw Shaft Sleeve	1	
KA 175	螺 母	Nut	3	
KA 176	压脚手柄弹簧	Spring for Prssure Foot Lever	1	M116
KA 177	压脚手柄螺钉	Pressure Fott Lever Screw	1	M115
KA 178	压脚手柄	Prssure Foot Lever	1	M217
KA 179	压肢杆	Prssure Foot Rod	1	M216
KA 180	压 脚	Pressure Foot Shoc'	1	M219
KA 181	螺钉M4 × 10	Screw M4 × 10	2	M113
KA 182	螺钉M4 × 20	Screw M4 × 20	1	M100L
KA 183	螺钉 M4 × 10	Screw M4 × 10	1	• M100S
KA 184	弹 簧	Spring	1	

5. 砂带磨削部分 LOWER GEAR BRACKET MECHANISM 代号(KA)



代 号	名 称	Desonription	数 量	备 注
Code Name			qt	Note
KA 185	推力轴承组合	Thrust Ball Bearing	2	M229
KA 186	右旋螺母	Nut for Screw Shaft R.H	1	} M104
KA 187	左旋螺母	Nut for Screw Shaft L.H	1	
KA 188	左螺母垫	Washre for Screw haft L.H	1	M105
KA 189	调节套筒	Space Tube	1	M107
KA 190	调节螺母	Stop Nut for Screw Shaft	1	M108
KA 191	左方轴导向柱	Left Hand Fillower Nut	1	M137
KA 192	右方轴导向柱	Right Hand Fillower Nut	1	M135
KA 193	左方轴	L.H Square Shaft	1	M138
KA 194	右方轴	R.H Square shaft	1	M136
KA 195	往复螺轴	Screw Shaft with Extension	1	M106
KA 196	螺钉M4×8	Screw M4×8	2	} M175
KA 197	垫 圈	Washer	2	
KA 198	后导轮架组合	Guide Back of Standard	1	M173
KA 199	右方轴下轴	Lower Shaft for R.H SquareShaft	1	
KA 200	螺钉M3×12	Screw M3×12	1	*
KA 201	螺栓M4×10	Adjusting Screw M4×10	1	M165S
KA 202	螺母M4	Nut M4	1	M165N
KA 203	螺钉M3×6	Screw M3×6	4	M161
KA 204	平衡架组合	Stabilizer	2	M172
KA 205	螺钉M3×5	Screw M3×5	2	M163
KA 206	涨紧轮弹簧	Spring for Pulley Slider	2	M181
KA 207	螺母M5	Nut M5	2	M184
KA 208	左涨紧轮导架	L.H.Slider	1	} M176
KA 209	右涨紧轮导架	R.H.Slider	1	
KA 210	涨紧轮	Tension Pulley	2	} M177
KA 211	涨紧轮轴套	Shaft Sleeve with Tension Pulley	2	
KA 212	涨紧轮轴	Shaft with Tension Pulley	2	
KA 213	限位调节弹簧	Spring for Arm	1	M188
KA 214	右夹板	R.H.Shoe	1	M169

5. 砂带磨削部分 LOWER GEAR BRACKET MECHANISM 代号(KA)



代 号	名 称	Desonription	数 量	备 注
Code Name			qt	Note
KA 215	左夹板	L.H.Shoe	1	M170
KA 216	左夹板弹簧	L.H.Sharpener Shoe Sping	1	M187
KA 217	螺钉M 4×6	Screw M4×6	2	M171
KA 218	砂 带	Abrasive Belts	2	M189
KA 219	右夹板弹簧	L.H.Sharpener Shoe Spring	1	M186
KA 220	夹板座套	Bushing for Shoe	2	M168
KA 221	夹板螺轴	Screw for Sharpener Shoe	2	M185
KA 222	限位调节板	Clamping Arm for Shoe	1	M183
KA 223	限位调节板螺钉	Screw for Clamping Arm	1	M182
KA 224	橡胶圈	Neoprene Band	2	M178
KA 225	砂带前导轮	Frount Pulley for Belts	2	M179
KA 226	滚针1.5×11.8	Roll Pin for Pulley 1.5×11.8	2	M180
KA 227	销 1.5×10	Pin 1.5×10	1	
KA 228	螺轴下挡圈	Callar for Lower Screw Shaft	1	M102
KA 229	衬 套	Bearing for Screw shaft	1	
KA 230	导轮衬套	Bearign for Shaft Extension	2	
KA 231	齿轮下座套	Bearing for Intermediate Gear	1	
KA 232	砂带架	Lower Gear Bracket	1	M162
KA 233	油 堵	Grease Plug	1	M160
KA 234	往复轴齿轮	Gear on Screw Shaft	1	M166
KA 235	双链齿轮	Intermediate Gear	1	M167
KA 236	齿轮下座盖	Gear Cover	1	M164
KA 237	螺钉M 4×14	ScrewM4×14	3	M158/159
KA 238	往复螺轴垫圈	Washer for Screw Shaft	1	
KA 239	左方轴齿柱	Gear shaft for L.H.Squaer Shaft	1	M138W
KA 240	左方轴垫圈	Lower Shaft for R.H.Square Shaft	1	
KA 241	注油牌	Grease Plate	1	
KA 242	螺母M 4	Nut M4	1	
KA 243	螺钉M 3×5	Screw M3×5	1	} M171
KA 244	垫 圈 3	Washer 3	1	